

Turning Points

newsletter

Wood Turning Center

March 2007

Issue: 01

A message from Albert LeCoff, Executive Director of the Wood Turning Center

Dear Friend of the Center,

I am proud to introduce this new electronic version of *Turning*

Points! The electronic format will allow us to keep you up to date and informed of the latest goings-on in the wood art field and also gives us the ability to offer more features than the print version. This sample newsletter is being sent to you to help familiarize you with the new format. Take a moment to browse the new features and proposed content. We'd love to hear your feedback... *Turning Points* is here to serve you, so let us know what you think and feel free to offer suggestions, comments, and content for us to include. All you have to do is click "reply" to send us a message.

Before I introduce the new editor of *Turning Points*, I want to thank Terry Martin for his years of service as editor of the print version. Under his expert guidance, *Turning Points* became a respected scholarly publication which helped propel the field of wood art. We are indebted to his skills, vision and commitment. Thank you, Terry!

Robin Rice, a Philadelphia-based art writer and Adjunct Associate Professor at the University of the Arts, will be taking over as editor of the new *Turning Points* newsletter. She writes about art and artists for numerous publications including ARTnews, American Craft and Woman's Art Journal. We're excited about her vision for the electronic version of *Turning Points*. Welcome, Robin!

Thanks also to our Publications Committee, chaired by Judson Randall, for their work surveying members and brainstorming new concepts for the future of *Turning Points*.

Once again, we're excited to bring you this new electronic version of *Turning Points* and look forward to all the possibilities this new format makes possible.

In This Issue

[Articles](#)

[Videos](#)

[Special Features](#)

[Events Calendar](#)

[Important Notice](#)

[Featured Objects](#)

[Coupon](#)

Featured Object from the Collection



John Jordan
Black/White Pair, 2000
Ash
7 x 22 x 9"
2005.11.05.002a.bG
Donated by the artist

"Black/White Pair was a clear vision in my mind from the beginning. A section of ash log was split to make the two pieces. The pair is about relationships - of the pieces having grown foot to foot, the opposing spirals and the black/white contrast. The grain

format makes possible.

Happy reading,



Albert LeCoff

Articles

You can look forward to new articles in each issue of the *Turning Points* Newsletter. The topics will range from reviews of exhibits to interviews with artists to theories of art education and more.



Robin Wood, author of *The Wooden Bowl*, studies and antique bowl.

Videos

This exciting new feature of the electronic version of *Turning Points* will allow you to watch interviews with artists and curators, experience gallery talks, and see clips from the International Turning Exchange (ITE) residents' experiences.



Vincent Romaniello films resident Hilary Pfeifer during the 2006 ITE residency.

Special Features

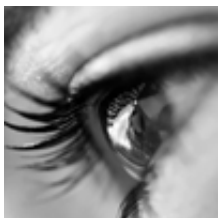


Also keep your eye out for new and rotating features, such as mystery photos, who's who, reading suggestions and more.

Can you identify this object? Hint: It's in our current exhibit.

Events Calendar

(click on title for event website)



Watch This Space:

The events calendar will contain information on current and upcoming exhibits, conferences, symposia, and other events. If you know of an event that you think we should list, please send us an email.



Coming of Age:

Emerging and Established Wood Artists

February 16 - May 19, 2007

Wood Turning Center
Philadelphia, PA, US

Thierry Martenon, 14042004, 2004



Roll Call:

patterns are very carefully balanced and wire brushed to emphasize those patterns."

-John Jordan

John Jordan is a woodturner from Antioch, Tennessee. Known primarily for his textured and carved vessels, John has been featured in nearly every major turning exhibition for the past 19 years. His work has received numerous awards and is in the permanent collections of many museums and corporations.

This pair of vessels was exhibited in the Center's *Challenge VI* exhibit in 2001 and is currently on display at the Center in our Permanent Collection Gallery.

Featured Object from Museum Store



Bill Smith
Emergence, c.2006
Wood
6 x 7" diam
\$1,800

"My work often provides for many hours of contemplation during the glue-up stage. This quiet and mentally uncluttered time allows my mind to wander and create associations between the developing piece and my mind's eye view of mythical places and imaginary things."

-Bill Smith

Born in 1947, Bill Smith received a Bachelor of Science from Penn State University. He has worked with wood in one form or another for his entire life

Students

Wood Art from Current Teachers &

June 1 - July 15, 2007

Wood Turning Center
Philadelphia, PA, US

Gareth H. Griffith, *From the Depths*, 2006

but has focused on wood turning since 1994. Bill enjoys demonstrating his turning techniques, especially in workshops on segmented woodturning .

For information on purchasing *Emergence*, please call the Center: **215.923.8000**

Important Notice:

Be sure to add our email address, turnon@woodturningcenter.org , to your "safe email" list to prevent this newsletter from ending up in your spam box each month. You can manage your subscription, including removing yourself from our email list, using the tools at the bottom of this email. This newsletter is sent via a spam-compliant bulk email service, Constant Contact.



Wood Turning Center

501 Vine St, Philadelphia, PA 19106, US
www.woodturningcenter.org
turnon@woodturningcenter.org
p: 215.923.8000 f: 215.923.4403

**Save
10%**

Check this section each month to look for special offers from the Center's Museum Store and to easily renew your membership online. Members receive 10% off any purchase of books, videos, and DVDs

[Click here to renew or to become a member online](#)